

Combining Local Innovative Capacities with Scientific Research (CLIC-SR)

Annual Partners Meeting 2014



Photo: PROLINNOVA-Ethiopia

Town View Hotel, Phnom Penh, 10 May 2014

26 June 2014

Table of contents

- ACRONYMSii**
- 1.0 INTRODUCTION.....1**
- 2.0 RECAPITALISATION OF PROJECT OBJECTIVES AND PURPOSE OF MEETING...1**
- 3.0 CURRENT KEY ISSUES IN PROJECT IMPLEMENTATION2**
 - 3.1 Capacity building2
 - 3.2 Linking farmer innovation with science.....4
- 4.0 PROGRAMME ISSUES6**
 - 4.1 Monitoring and evaluation.....6
 - 4.2 Partnership composition7
 - 4.3 Policy dialogue issues7
- 5.0 ACTION POINTS AND NEXT STEPS.....8**

- Appendixes**
- Appendix 1: List of Participants9
- Appendix 2: Programme of CLIC–SR annual partner meeting..... 10
- Appendix 3: Presentation summary CLIC-SR project and activities..... 11
- Appendix 4: Presentations on progress by the four CLIC-SR country platforms 12

Acronyms

| | |
|------------|--|
| CBO | community-based organisation |
| CC | climate change |
| CCA | climate-change adaptation |
| CCAFS | Climate Change, Agriculture and Food Security |
| CLIC–SR | Combining Local Innovative Capacity with Scientific Research |
| CP | Country Platform |
| DFID | Department for International Development (UK) |
| IIRR | International Institute of Rural Reconstruction |
| IPW | International Partners Workshop |
| IST | International Support Team |
| KARI | Kenya Agricultural Research Institute |
| LSC | Local Steering Committee |
| LI | local innovation |
| LINEX–CCA | Local Innovation and Experimentation for Climate-Change Adaptation |
| LISF | Local Innovation Support Fund |
| MoU | Memorandum of Understanding |
| M&E | monitoring and evaluation |
| NARO | National Agricultural Research Organisation |
| NGO | non-governmental organisation |
| NRM | natural resource management |
| Nuffic | Netherlands Organisation for International Cooperation in Higher Education |
| PANE | Poverty Alleviation Network Ethiopia |
| PE | PROLINNOVA–Ethiopia |
| PELUM | Participatory Ecological Land Use Management |
| PID | Participatory Innovation Development |
| PROLINNOVA | PROMoting Local INNOVation in ecologically oriented agriculture and NRM |
| PTz | PROLINNOVA–Tanzania |

1.0 Introduction

The CLIC–SR (Combining Local Innovative Capacity with Scientific Research) project under the umbrella of the PROLINNOVA¹ network promotes farmer-led joint innovation development that builds on the creativity of local people in ways that seek to enhance local capacities of farmers and communities to adapt to change, including climate change (CC). The project is funded by the Rockefeller Foundation and aims to:

- i. Strengthen the resilience to change of smallholders and their communities, especially the women, by enhancing their innovative capacity and thus their livelihood security through Participatory Innovation Development (PID)
- ii. Build the capacity of organisations working in agriculture and natural resource management (NRM) so that they can effectively work with and support smallholder communities in their efforts to adapt
- iii. Increase insights and awareness on relevance and effectiveness of PID through sharing and learning
- iv. Mainstream PID as an accepted approach within targeted national and international policies and programmes related to agricultural development, NRM and climate-change adaptation (CCA).

The CLIC–SR project started on 1 September 2012 and is being implemented in four countries in East Africa: Kenya, Uganda, Tanzania and Ethiopia. In the first four months – September to December 2012 – inception and planning workshops were held in all four countries, while field studies were designed on local perceptions of external changes and responses to these. The fieldwork commenced in Ethiopia and Kenya in late 2012, while the Country Platforms (CPs) in Tanzania and Uganda commenced this work in early 2013. In addition, from then onwards, training in PID was given to various stakeholders from non-governmental organisations (NGOs), research institutions and other government agencies. Partners discussed and reviewed experiences and challenges at the first annual partner meeting in Nairobi, Kenya, in May 2013 (report available at http://www.prolinnova.net/sites/default/files/documents/thematic_pages/clic_sr/clic-sr_annual_meeting_report_2013_edited.pdf). Following that meeting, the CPs involved have improved programme implementation and undertaken activities following agreed workplans.

This report documents the second annual partners meeting, which was held in Phnom Penh on 10 May 2014 to review progress made as well as lessons learnt and challenges. The programme of the meeting and the list of participants can be found in Appendix 1 and 2, respectively. All CPs and key partners involved in the project were represented at the meeting. ETC Foundation staff facilitated most sessions, supported by staff of the International Institute of Rural Reconstruction (IIRR) particularly on issues related to monitoring and evaluation (M&E).

2.0 Recapitalisation of project objectives and purpose of meeting

Laurens van Veldhuizen of the PROLINNOVA International Secretariat, ETC Foundation, presented a brief review on the objectives of CLIC–SR, including the activities under each objective (see Appendix 3). The central concern in the project is to bring different knowledge systems together and to strengthen community resilience. The focus of CLIC–SR is to see how people are reacting to change, and how to bring in scientific knowledge to support

¹ PROLINNOVA: **P**romoting **L**ocal **I**nnovation in ecologically oriented agriculture & natural resource management

adaptation to any kind of change that affects agriculture. Examples of changes other than climate that affect agriculture include infrastructure development, population growth, HIV/AIDS and other diseases.

The following issues emerged in response to the introductory presentation:

- In general, it was emphasised that especially mainstreaming PID is difficult. It is a slow process; this requires a balance between showing something (results), while giving the process the time it needs.
- The importance was stressed of interrelating the various activities we are doing within CLIC–SR, not doing them as stand-alone activities, e.g. by relating outcomes of joint experimentation to policy influence.
- It is important to make more visible how activities are linked with other work that all partner organisations are doing; e.g. by linking it to other work of IIRR and INADES on CCA; and bring this also into the progress reports.
- We need to share linkages with other related activities, projects or programs which are working in the same spirit; this can be encouraging and inspiring.

The purpose of the second annual learning and planning meeting was to review the experiences and challenges over the past year. The main objectives of the meeting were:

- i. To share and learn from each other about how we are approaching CLIC–SR, with focus on:
 - a. Capacity building in Participatory Innovation Development (PID)
 - b. Linking farmer innovation with science through joint experimentation and Local Innovation Support Funds (LISFs)
- ii. To review and address programme issues related to M&E, partner composition and policy dialogue
- iii. To agree on ways of improvement in our work and next steps.

3.0 Current key issues in project implementation

Each of the four CPs had been asked to prepare presentations on: i) work done over the last year and results realised, particularly looking at capacity building at the local and national level; and ii) linking farmer innovation as response to change with science through PID and LISFs. In the sessions covering these two sets of activities, two of the CP representatives presented the relevant parts of their PPTs, while the other CP representatives added their experiences in the plenary discussion. The presentations prepared by the country partners varied in terms of quality and length, but they provided useful and relevant inputs to the discussions as shown below (for full text of the presentations, see Appendix 4).

3.1 Capacity building

Kenya: Righa Makonge of World Neighbors presented capacity-building work by Kenyan CLIC–SR partners. He emphasised that they use conventional training sessions for capacity building, but also incorporate capacity building into many other activities. Various stakeholders, also from the local level, were included in national training activities on PID. One first training course was carried out at the start of CLIC–SR using only project funds while, in 2013, a more in-depth training of trainers in PID was undertaken for CLIC–SR partners and others with co-funding from Nuffic (Netherlands Organisation for International Cooperation in Higher Education). While CLIC–SR partners apply the learning in training at the local level, it is less clear to what extent the others involved in the Nuffic-supported training are building PID into their workplans and day-to-day work. Particularly researchers

who took part in the PID training have been found to have started to identify farmer innovations but are yet to go into joint experimentation / PID. This needs to be a negotiated process so that farmers' questions are being addressed, based on their own innovation initiatives. Capacity-building sessions are also built into farmer innovation fairs, where people can discuss farmer innovation and joint experimentation. Farmers are asking researchers for assistance in better ways of experimentation and documentation.

One joint experiment is being carried out with the local innovation of the finger-millet nursery; preparation for this experimentation incorporated a capacity-building component. Other farmers take part by establishing their own plots as trials. Farmers in the area are now more interested in PID; farmers are bringing in their own innovations.

Main points from the discussion on the Kenya presentation were:

- Documentation of the process remains a big problem; a solution might be interviewing key people from partners as well as from among farmers and writing down the stories; or preparation of video films in selected cases.
- Need for following up on trained (“master”) trainers in how they are training others, and in how they are practising PID. Local trainers can function as brokers between farmers and researchers.
- How are researchers attracted to take part in the PID training? By linking to researchers' own interest to find ways to be able to do research that will be adopted by farmers, and are therefore interested in PID. In Kenya, informal lobbying by Geoffrey Kamau, who works in KARI (Kenya Agricultural Research Institute), also encouraged researchers to join the training. The culture within KARI has changed; some researchers are sensitive about the need for PID but do not know how to do it; the PID training filled a gap. They learned a lot also through peer review during the training. The practical work helped, as they were challenged to come back to the second part of the training with innovations they had identified in the field during their regular work.
- Another way to attract researchers is to review who is doing what in formal research and then bring in ideas from farmer innovators that link to what the researchers are working on.
- Sharing of researchers' stories of PID in a wider platform of researchers was used in Tanzania to introduce these people to PID.
- After one year, it would be good to hold a one-day session when everybody who was trained in PID comes back to report what they have done.
- Conventional funding can constrain PID: researchers often claim that they do the research that is funded by donors, and few donors want to fund PID.

Uganda: Harriet Ndagire from Kulika Uganda, one of the CLIC–SR implementing organisations, gave a brief overview of capacity-building activities. Uganda has also started a national training programme with co-funding from Nuffic, involving NGOs, a research institution, farmers and farmer organisations, and local government staff. A total of 17 organisations were involved. Each is now expected to go back and identify two local innovations for further development. One-day training workshops in the communities are planned. Capacity building in PID and LISFs started a long time ago in previous work done by PROLINNOVA–Uganda. The training purposely used already experienced farmer innovators and, in the national-level training, also through a one-day field visit to interact with farmers experimenting with seed selection and storage (seed selected according to what communities and buyers want). A woman farmer is processing amaranth seed into different products. Formal researchers (scientists) are now being brought on board.

Events for sharing are also a good way to do capacity building, especially for farmer-to-farmer training, not only in a workshop environment. It is important to create different platforms also at the grassroots, where communication can be in the language and concepts that the local actors understand. Local government officials are involved in the sharing

events; this is an opportunity for lobbying at local level, e.g. when holding an exhibition. The local government may be able to provide some funds to hold such events. CLIC–SR is creating a forum for farmers to share with others in the community. Institutionalising PID at district and sub-district level is expected to be quicker than at national level. The team in Uganda therefore seeks to work particularly with people at district level. The next step it has planned is to focus on local innovation and PID by women, youth and people with disabilities or affected by HIV/AIDS.

Issues that were discussed after this presentation included the following:

- It was observed that, in most countries, the CLIC–SR project works with only one research institution, e.g. KARI in Kenya, NARO (National Agricultural Research Organisation) in Uganda. It might be important to involve also other research institutions, including people in public and private universities.
- With regard to documentation of PID, it was mentioned that farmers may not understand English or be able to write, but they could document through video. However, this requires support and capacity.
- PROLINNOVA–Tanzania (PTz) has developed guidelines for participatory research oriented to CCA, but they have not yet been operationalised. Most people in agricultural research and development are still thinking in conventional roles; PTz gets them to discuss their roles as part of the PID training.
- When doing local-level training, INADES and Tanzanian partners have found that the best way for people to share their knowledge at local level is through living practical examples in the field, through the people's own stories. It would be useful to have a training manual on PID to enhance community resilience, with key messages, principles and ways of discussing and showing things. The main criteria used by PTz for selecting trainers at local level are: they are interested in innovation, they have demonstrated ability to innovate, and they are willing to share.
- It was observed that two CPs already work with local platforms: the Axum platform in northern Ethiopia and the Local Steering Committees (LSCs) in Kenya. Such platforms are not yet functioning in Uganda and Tanzania, but the CPs are moving in this direction. The local platforms do not have to be formalised but, in Kenya, the LSCs are registered as community-based organisations (CBOs). The formation of local platforms should be based on the results of the initial studies in each of the selected districts, in which the main actors who can contribute in building resilience were identified.
- Facilitation and communication skills should be an important part of capacity strengthening: how can we communicate with policymakers, with researchers, with farmers etc? It helps to include co-trainers who have natural communication abilities.

3.2 Linking farmer innovation with science

Tanzania: Patrick Mbanguka Lameck from INADES–Formation Tanzania presented experiences of CLIC–SR partners in Tanzania in organising joint experimentation. In the Tanzania case, farmer innovators have selected researchers to do PID with them, partly based on the farmers' and INADES' past experience of interacting with these researchers. The researchers were trained in PID even before the CLIC–SR project started and already understood the principles. INADES developed a simple guide for preparation of proposals for joint experimentation by farmers. Farmers make draft proposals, which are then developed jointly, deciding on research questions and how things will be measured. There has been a continuity of collaboration with a small number of formal researchers. Those who were interested in PID are now making progress and publishing papers; and other researchers are gradually developing interest in PID.

The discussion focused on how decisions are made in selecting proposals and how this links to functioning of LISFs:

- INADES–Formation, the CLIC–SR coordinating NGO in Tanzania, is seeking a balance in decision-making by men and women, young and old. This is reflected in the criteria for selecting joint experimentation proposals to fund.
- The key factor in PID is: who makes the decisions? It appears that, in Tanzania, the process of deciding which proposals for joint experimentation are to be funded is still rather centralised. It would be important to decentralise, to operate at district level rather than at regional or national level.
- In each of the seven joint experimentation proposals selected, more than one farmer is involved. Several farmers are doing experiments together in one place, as a group around an innovator. The project is not buying usual working tools or materials for the farm, only research materials. Funds allocated per proposal amount to 400,000–500,000 TSh (250 USD). In comparison, in Kenya, a joint experiment designed and managed by researchers on millet transplanting had a budget of 260,000 KSh or 3000 USD! The Tanzanian farmers decide what researchers or other advisors need to do in the experiment and how much the farmers could afford to pay as daily allowance. The Memorandum of Understanding (MoU) is made between INADES as CLIC–SR coordinator and the farmer innovator and INADES pays the researchers’ part of the budget directly to them.
- In Kenya, the MoU is between the CLIC–SR coordinating NGO and KARI, and the joint experiment is incorporated into the research centre’s workplan.
- In Ethiopia, informal experimentation is happening parallel to the formal joint experimentation. It is not clear whether LISF is being used in Axum and whether it is to be used in Enebse.

Ethiopia: Yohannes GebreMichael from Addis Ababa University, one of the supporting partners in CLIC–SR in Ethiopia, focused his presentation on joint experimentation / PID in Ethiopia over the last year (see Appendix 4). He gave details on the joint experiments carried out thus far.

Discussion of the Ethiopian experiences revolved around issues of actors’ roles and incentives:

- What is the role of the formal researcher in joint experimentation? Why is a scientist needed? For what purposes is local experimentation needed, for the farmers only? It also has to address wider research issues if it is to be joint experimentation between farmers and scientists. Research support would help to identify underlying issues, to document results, to be able to mainstream results. The joint research needs to be negotiated to include questions of interest to both parties. Research is meant to generate not only technologies for use by farmers involved but also information for wider sharing (“public goods”). What is crucial in PID design is to look at what farmers are already doing. It is an incentive for researchers if the joint experimentation also addresses their research issues/ topics.
- It was suggested to organise a “market place” to offer farmers’ proposals and to ask researchers to sign on to work together with specific farmers. It was pointed out that joint experimentation could involve not only scientists but any relevant actors in the innovation system.
- The importance of giving attention to farmer organisation was highlighted: empowering farmers to demand the research they want. They could also express their demands to universities. PID would be a way to encourage farmers to express their demands.

4.0 Programme issues

Three programme issues needed focused attention: monitoring and evaluation (M&E), partner composition, and policy dialogue.

4.1 Monitoring and evaluation

Marise Espineli from IIRR facilitated the session on M&E. She informed the participants that, as input to the annual CLIC–SR meeting, all CPs had managed to use the M&E forms to compile key data on work realised and had sent the filled-in forms to her. However, using certain parts of the forms appeared to be a challenge to some CPs.

Participants from the CPs suggested a number of improvements in the current M&E forms to make them easier to use:

- There is confusion about what is to be included under PID that is financed through CLIC–SR; it should be linked to the innovations that were identified in the initial field studies.
- Even when PID cases are crosscutting, they should preferably be classified according to the main category of topics.
- The activities related to sharing are sometimes overlapping with the activities related to policy dialogue; they should be mentioned only once, depending on which aspect predominates.
- It is important to note how many people from which stakeholder group have been trained, how many were male and how many female, but not the names of each participant.
- Some information about what the CP is doing does not fit into the current M&E forms; space should be created for this.
- The summary sheet should be changed to reflect the actual situation instead of the targets.

The forms are for M&E of the project, but M&E is also a part of the joint experiments in the PID activities. For example, PROLINNOVA–Kenya is following up on the workplan that the farmer groups have set up with their own schedules for M&E of the experiments. Four farmers were identified to collect data, and end-of-season evaluations are made. In Ethiopia, it was not clear how M&E is being done in the farmer-led experimentation.

It was agreed that the following will be done:

- Marise to improve the forms based on the above discussion.
- Marise to identify gaps in the way each CP has filled in the M&E forms and inform all CP coordinators what gaps still need to be filled in; IST members from ETC to support CPs in addressing the gaps.
- It is up to each CP to decide who at what level in the CP should fill in the forms.
- The CP coordinator should follow up on what happens after capacity-building activities.
- Outcome monitoring still needs to be done; this will be an issue for next year's annual CLIC–SR meeting.
- CP representatives to review shortlisted resilience indicators developed during last year's annual meeting and how relevant information is to be collected, in preparation for the resilience session in the International Partners Workshop (IPW) 2014 starting next Monday.
- Rigba to share report on short study that was made on the farmer-level outcome of the farmer innovation fair held last year in Nairobi.
- Yohannes to provide information as to whether LISF is being used in Axum and whether it is to be used in Enebse.
- Yohannes to provide information about how M&E is being done in the farmer-led experimentation in Ethiopia.

4.2 Partnership composition

A quick review was done to analyse the partnerships developing involved in each country for the implementation of CLIC–SR activities. The focus was on organisations that are making a substantial contribution to the work. According to the CP representatives, the partnership composition in the respective countries is currently as shown below.

| Uganda | Kenya | Tanzania | Ethiopia |
|---|---|---|--|
| <ul style="list-style-type: none"> - 2 NGOs - 1 NARO research institute - Local government in the two districts - Farmer groups | <ul style="list-style-type: none"> - 3 NGOs - 1 research organisation - 1 government extension partner - All working with farmer innovators and groups at local level | <ul style="list-style-type: none"> - 1 NGO - 3 research organisations in joint experimentation - 2 district agricultural departments providing field coordinators - Village governments - Farmer research groups - PELUM platform | <ul style="list-style-type: none"> - 1 NGO network - Bureau of Agriculture - ATVET* college - 1 NGO - 1 CBO - 1 consultancy company - 1 university - 1 research institute - Farmers |

* ATVET: Agricultural Technical and Vocational Education Training

It is clear that CLIC–SR has created multistakeholder dynamics. It is still an issue whether only some individuals or their full organisations are involved. Some signs of organisational commitment include:

- Tanzania: Research organisations include the joint experimentation in their organisational reports (30% of activities reported on in previous year involved joint experimentation)
- Uganda: A CBO partner paid for its ticket to go to the IPW2013 and the following innovation fair; the research partner did the same.

It was agreed that, from now on, partnership composition will be included in the information in the annual reports from the CPs.

4.3 Policy dialogue issues

In **Uganda**, partners have started to draft a document to influence government at national level to recognise local innovation, although recognising that relevant policies are also needed at other levels. PID is being mainstreamed within Kulika, one of the CLIC–SR partner organisations, which is also working on CC policy advocacy.

In **Tanzania**, INADES–Formation finds it difficult to influence policy at national level, but intends to review the national research and extension policy strategy: client-oriented research has been piloted and endorsed in Tanzania, so influence would include monitoring implementation of the existing policy and seeing how PID could be incorporated into it. People are often not aware of supportive policies they can make use of. INADES plans to link with policy work of the NGO network PELUM (Participatory Ecological Land Use Management) and possibly also with that of ESAFF (Eastern and Southern Africa Small Scale Farmers' Forum).

In **Ethiopia**, the CLIC–SR team will revisit the policy-influencing review done last year and draw up a practical plan for policy dialogue. It already started to involve local policymakers during the initial field studies at both sites. It can now use its host organisation PANE (Poverty Action Network Ethiopia) to reach higher-level policymakers. There may also be a possibility to exert policy influence through the project of one of the partners (Institute for

Sustainable Development) with SCIP (DFID-funded Strategic Climate Institutions Programme).

In **Kenya**, PROLINNOVA–Kenya – through the CLIC–SR project – held a multistakeholder policy-oriented workshop in November 2013, a report of which is available. As a follow-up, it now intends to work with the devolved government at county level in its areas of operation.

5.0 Action points and next steps

- Each CP to make at least a one-pager on its dissemination strategy after ETC provides a simple format. The dissemination and policy strategy should be linked, building on what has been learnt as a result of the policy-influencing study.
- Communication between the CP coordinating partners and the IST needs to be improved further through use of Skype and, wherever possible, face-to-face meetings tagged onto visits by IST members for other purposes, seeing as there is no budget in the CLIC–SR project for backstopping visits.
- The procedures for handling flow of funds, which were explained once more during the meeting, are straightforward. There should be no delays in activities because of late sending of funds: the CP coordinators simply have to list what they have done, how much of the previously transferred money has been used, how much is left and request the next tranche in good time.
- The CP partners are interested in making joint projects and need to identify someone from one of the CPs to coordinate the writing of proposals.
- Planning of the resilience session in the IPW2014 starting Monday: A team is formed to prepare a presentation on the lessons from this annual meeting with a focus on resilience, and another presentation on indicators and ways of measuring them.
- A book based on CLIC–SR experiences focusing on resilience is part of the planning. Agreement is to include only Eastern African cases (and not Asian ones through the LINEX–CCA project); a suggestion was made to organise a writeshop next year, possibly piggybacked on the IPW; perhaps in collaboration with the CGIAR research programme CCAFS (Climate Change, Agriculture and Food Security); the possibility of a joint book with CCAFS with joint funding could also be explored. Quality control would be through peer review, possibly by Julian Gonsalves and others in the PROLINNOVA Oversight Group (POG) or by CCAFS or internally within PROLINNOVA.

Appendix 1: List of Participants

| Name of participant | Country | Sex | Organisation |
|-------------------------|-------------|-----|---|
| Amanuel Assefa | Ethiopia | M | Precision Consulting International CLIC–SR Ethiopia |
| Ann Waters-Bayer | Germany | F | ETC Foundation PROLINNOVA International Support Team |
| Harriet Ndagire | Uganda | F | Kulika Uganda CLIC–SR Uganda |
| Kees Swaans | Netherlands | M | ETC Foundation PROLINNOVA International Support Team |
| Laurens van Veldhuizen | Netherlands | M | ETC Foundation PROLINNOVA International Support Team |
| Makonge Righa | Kenya | M | World Neighbors CLIC–SR Kenya |
| Marise Espineli | Philippines | F | IIRR PROLINNOVA International Support Team |
| Patrick Mbanguka Lameck | Tanzania | M | INADES–Formation Tanzania CLIC–SR Tanzania |
| Yohannes GebreMichael | Ethiopia | M | Addis Ababa University CLIC–SR Ethiopia |

Appendix 2: Programme of CLIC–SR annual partner meeting

| Time | Topic | Notes |
|-------|---|--|
| 8:30 | Welcome & introductions Meeting objective, programme, logistics | |
| 9:00 | Capacity building <ul style="list-style-type: none"> • local – community level • national level, training of trainers | Presentation on these issues by two CPs Comments from the two other CPs Discussion and ways to strengthen the work |
| 10:30 | Break | |
| 11:00 | Linking farmer innovation with science: <ul style="list-style-type: none"> • joint experimentation • set-up and functioning of LISF | Presentation on these issues by two CPs Comments from the two other CPs Discussion and ways to strengthen the work |
| 13:00 | Lunch | |
| 14:00 | Programme issues: <ul style="list-style-type: none"> • M&E, learning, and documentation of experiences • Partnership functioning, project and PROLINNOVA national level • Policy dialogue | Review of M&E information provided to Marise; discussion Plenary updates and discussion Plenary updates and discussion |
| 15:30 | Break | |
| 16:00 | Way forward: <ul style="list-style-type: none"> • Realisation of joint experimentation and LISF • Dissemination strategy and preparing for publications (LI case studies, PID cases, policy brief) • Communication • Financial management • Preparing for session in IPW2014 | Plenary discussion |
| 17:30 | Closure | |

Appendix 3: Presentation summary CLIC-SR project and activities



1. *Strengthen resilience to change of smallholders and their communities, especially the women, by enhancing their innovative capacity through Participatory Innovation Development (PID)*

- *Field studies* on local perceptions of change (including climate change) and local innovative response; & joint comparison of perceptions with 'official' data
- *Implementation and documentation of farmer-led PID* through adapted Local Innovation Support Fund (LISF) and possibly some PID led by outside agencies
- *Training community groups* in PID, LISF management (& CCA & agricultural meteorology)

2. *Build capacity of organisations so that they can effectively support smallholder communities in adapting*

Staff training

- *Participatory Innovation Development (PID)*: building resilience and adaptive capacity through farmer-led joint innovation: basic principles, methods and tools
- *International and national climate-change issues* and developments and how these link to realities and other changes at local level

3. *Increase insights and awareness on relevance and effectiveness of PID through sharing and learning*

- *Facilitation of PROLINNOVA partnership*

• *Country-wide dissemination of findings*: dissemination plan; e.g. documents on local innovation, PID case studies, contributions to magazines, policy brief, uploading to websites ...

- *PROLINNOVA International Partners Workshop*
- *International dissemination of findings*: dissemination plan; policy brief, info on websites, lessons into CCA course; articles; participation in conferences; co-publishing booklet with LINEX-CCA

4. *Mainstream PID as an accepted approach within policies and programmes related to agriculture, NRM and CCA*

Country-based policy dialogue:

- Initial review on experiences with policy change
- Provide inputs into policy activities (agriculture, NRM & CCA) by others (possibly also use of national CC funds)
- High-profile policy event
- Join alliances (e.g. CCA)
- Respond flexibly to emerging policy issues

International policy dialogue:

- Synthetic report on policy-change experiences
- Lobby at international level and linking with alliances

Appendix 4: Presentations on progress by the four CLIC-SR country platforms

Combining Local Innovative Capacity with Scientific Research (CLIC-SR)

by
Makonge Rigba
PROLINNOVA Kenya

CLIC-SR annual meeting
Phnom Penh, Cambodia
May 10, 2014

Lessons from PID training - Community and organization levels

- There is interest in both individuals and organizations working on local innovations.
- The concept of joint experimentation where the farmer innovator plays a key role in the design, implementation and M&E is a new concept.
- Organizations and especially researchers appreciate the role of local innovators play in promoting agricultural development and NRM management.
- Already the researchers and organization staff have come across various innovations developed by farmers during their day to day filed activities.

Cont.....Lessons from PID training - Community and organization levels

- Farmers readily adopt what has been developed and tested by fellow small holder farmer
- Farmers recognize that they do not have the capacity and require support from researchers and other stakeholders e.g. intellectual property rights, marketing institutions

Results of PID training

- Researchers, extension workers and farmers ready to work together to develop local innovations
- Researchers and farmers are able to approach each other and negotiate the process of developing the local innovation
- Institutionalization of PID and both individual and organization levels. Though thus is still a challenge due to bureaucratic process and institutional framework
- Poor follow-up of the trainees in particular to various projects they were to undertake

Joint experimentation

- Innovation of planting finger millet in a nursery before the onset of rains and then transplanting the seedlings to the main farm at the start of the rains.
- The purpose is to validate the innovation, to assess the appropriate nursery size and management methods, transplanting approach and possibilities of scaling out the innovation.
- The PID team composed of various partners – KARI, the MoA and INADES – Formation – negotiated a PID process with farmer groups

LISF experience

- Farmers just need encouragement and recognition to innovate. This gives them the motivation to further improve on their innovation as well as share with other people.
- Builds capacity of local innovators to develop their innovations
- Supports the establishment of linkages between local innovators and other organizations e.g. research institutions, standardization bodies etc
- Built organization capacity of farmers e.g. formation of groups, open bank account, monitoring and evaluation, reporting etc.

Cont..... LISF experience

- Emerging of other local innovators- Farmer have been innovating but most doing so at household levels with few people aware.
- Advocacy – e.g. formation of the Kenya Farmers Innovation Association that is promoting farmer-led innovation.
- Local innovation could be an ideal starting point for various rural participatory processes
- Farmers are clear about the challenges they would like to address: their innovations (experimentation) are needs-driven

Monitoring and Evaluation

- M&E responsibilities in the CLIC–SR project lie with KARI who support overall coordination.
- The project also uses implementing partners and Local Steering Committee (LSCs) in monitoring the project activities
- Monitoring and Evaluation Framework for LISF in place
- Sometimes innovators make decisions, that are often not communicated to the secretariat/NSC that affect the development of the innovation and planned M&E

Challenges

- Partner high staff turn over – partners play critical role in planning, implementation, M&E and reporting, thus when staff already trained in LI and PID leave a gap is left.
- Institutionalization of PID due to policy and institutional frameworks – use PID converters, invitation to PK forums e.g. innovation faies
- Advocacy – getting the relevant/ key persons to attend key PK functions. Most send representatives
- Documentation is still weak at both farmer and organization level – continued capacity building and follow ups

Cont..... Challenges

- Lean secretariat that often gets overwhelmed. To support the secretariat PK uses volunteers and members staff where possible
- LSC capacity is still low- e.g. not able to develop strong proposals, network (e.g. approach local funding agencies for support) – PK continued to build the capacity through use of various forums organized by PK and partners



CLIC – SR ACTIVITIES

Uganda

Notes for CLIC-SR meeting
Cambodia, May 2014

- **Planning Workshop**
- **Implementing Partner Selection- EA and Kulika Uganda**
- **Where ? Moyo and Nakasongola District**
- **Detailed Planning by the Implementing Partners**

CLIC-SR ACTIVITIES IN THE DISTRICTS

- Inception Workshops
- Field studies
- Documentation
- IPW 2013
- Sharing Event
- Exhibition
- International Farmer Innovators Day Celebrations 29th November 2013

Activities in the Districts Cont'd

- Innovation Identification
- PID Training
- Planned activities
- **Training Community Groups in PID**
- **Documentation of farmer-led (local) innovations**
- **Training of CBOs in management and governance of the local innovation funds**

Planned Activities Cont'd.....

- **LISF Grant to 4 CBOs**

CONCLUSION

- Appreciation of Local innovation as a means of addressing challenges presented by Change
- The need for joint action and bringing multi-stake holders on board
- **Need to Address Challenges**

- **CLIC – SR Tanzania**

- **Update of what we have accomplished and experienced/learnt in the past year in.**

- *By Patrick Iameck*
- *Coordinator CLIC SR Tanzania*

Lessons from PID Trainings

- **Building on farmer skills knowledge and experiences reduces joint experimentation costs (as it utilizes locally available resources which are of low costs) and ensure relevance of research to the rural world..**
- **One extensionist said that he quite accepts PID approach but he was worried that the government gives them meagre resources, how can they implement PID. He was replied that PID exploits local experience and innovations and utilises locally available resources. What he needs to do when he talk of Industrial fertilisers, he also talk of “mapambano” compost innovation as a start. The lesson is PID utilises locally available resources and build from farmer experiences hence no much fund required to implement PID.**

- **Most research that are donor driven have been found not relevant and hence not up taken by farmers .**
- **If farmers understand their roles in joint experimentation and those of other players, will facilitate their active participation in the whole research process and hence uptake of their results**
- **Participatory development of innovation build research capacity to all players being Farmers, extension, development worker and researchers as it ensures common understanding of research process.**
- **In joint experimentation farmers taking a leading role with other players remaining facilitators ensures relevance and so uptake of research products**

- **After understanding PID farmer realised that they have a lot to contribute in joint experimentation.**
- **Most research information and products lie in researchers offices not reaching target population.**
- **Researchers were not concerned with the uptake of research information and products. They thought it is a role of extensionist.**
- **Farmer’s creativity and innovativeness can be cultivated by PID approach.**
- **PID ensures relevance of research and extension service delivered to farmers**

Status of implementation of joint exp. between local innovation and formal research,

- **Farmer exposed to joint experimentation research funds.**
- **Farmer trained on proposal development.**
- **Farmer made and developed research proposal for JE.**
- **Proposals were presented to other farmers during PID training, shared and improved.**
- **Some experiments completed, some ongoing and some waiting for funds**

Status continue

- **Research proposal (7) were refined and approved in the Regional coordination committee meeting with 2 farmers participating.**
- **Researchers for joint experimentation were selected by farmers them selves and established strategies for implementation.**
- **Farmer have organized and prepared the local available materials ready to start joint experimentation.**

Results of Joint experimentation

- **Farmer understood their role in joint experimentation and those of other players.**
- **7 joint experimentation proposals have been approved for funding.**
- **More farmer research proposals are coming.**
- **Farmers used to consider researchers and extensions as their boss hence dictate terms, farmers now consider them as partners.**

Results continue

- **Researchers are now interested and have participated in PID activities such as research on farmer innovation and sharing the results with other players.**
- **Researchers have showed willingness to solicit other sources of funds for JE.**
- **Extensions have promised that when training farmer on technologies they will also share innovation.**

Results continue

- **Researchers confirmed that they have been doing top down research that have also been not taken up by farmers.**

Lessons on LISF

- **When trained, farmers can manage well research funds for joint experimentation.**
- **LISF funds are not as costly in experimentation as compared to those managed by researchers.**
- **Having an MOU with farmers on LISF funds ensures better use of the fund and hence value of money for joint research.**
- **Farmers have been able to develop research proposals.**
- **Farmers had their own thinking and way of collecting data that was improved. Eg to them a weight of 2.3 kg they just write 2 kgs.**

Lessons continues.

- **Most farmers were not aware of their roles and that of other players hence depended everything from experts (including research materials).**
- **Has been the important platform that has brought aboard researchers to work on farmer innovations and interact directly with farmers.**
- **Researchers confirmed that they have been doing top down research that have also been not taken up by farmers**

Lessons continue

- **Extensions confirmed that they were doing things that come from their boss ignoring farmer experiences and innovations and so their uptake was not encouraging.**
- **Research funds and process never reached nor shared with farmers**

Group work presentation from researchers during PID workshop in Chamwino



CLIC-SR International meeting Nairobi



Farmer Innovators Fair in Nairobi



NGO group work during PID workshop in Chamwino District Tanzania



Regional Coordination meeting, Dodoma



District Commissioner of Kongwa Opening training on PID to Gos and CSOs



District Agriculture Development Offices for Bahi District making a point during PID workshop



Kongwa District Commissioner after opening participated in the training on PID to GOs and CSOs



**Strengthening Community Resilience to Change:
Combining Local Innovative Capacity with
Scientific Research (CLIC-SR)**
Prolinnova-Ethiopia, Cambodia, May, 2014 YGM



Major objectives

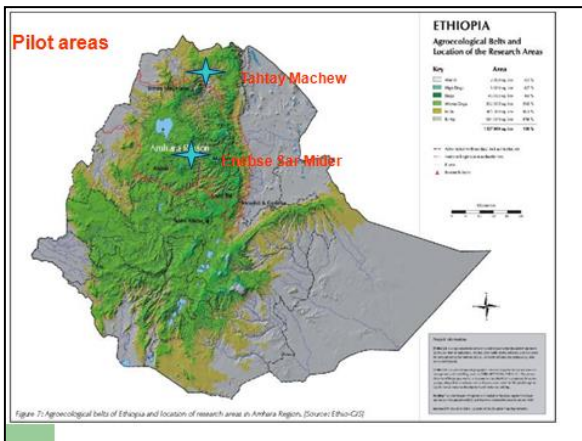
- > Strengthen the resilience to change through PID
- > Capacity building on agriculture and NRM
- > Awareness on relevance & effectiveness of PID
- > Mainstream PID as an accepted approach

Expected outcomes

- > Innovation capacities strengthened
- > Supporting farmer-led adaptation and innovation
- > PID and its role in building community resilience
- > Adaptations to any change with PID approach

PE CLIC-SR Project activities

- > Strengthening innovative capacity of communities
 - > Capacity building in PID and CCA
 - > Sharing, learning and dissemination
 - > Mainstreaming and policy dialogue
 - > Staffing, management and technical support
- Actors**
- > Hosting: Poverty Action Network in Ethiopia (PANE)
 - > Technical Advisory Group: AAU, ISD, EIAR and PCI
 - > Members and Platforms



Changes perceived (Tahtay Machew)

Positive

- > Social services development
- > Expansion of extension service
- > Establishment of small towns
- > Expansion of SWC works



Negative (TM)

- > Shortage of fuel wood/fodder
- > Erratic rainfall
- > Unreliable market prices
- > Infestation pests and disease
- > Reduction of soil fertility

Adaption (TM)

- > Diversity crop/livestock
- > Improve Soil fertility
- > Local innovation
- > Post harvest technology
- > Water harvesting



Changes perceived (Enebse Sar Mider)

Positive

- > Social services development
- > Expansion of extension service
- > Establishment of CBOs
- > Empowerment of Women

Negative (ESM)

- > Erratic rainfall
- > Infestation pests and disease
- > Increase prices of inputs
- > overgrazing, deforestation
- > Conflict, corruption,
- > Human trafficking

Adaption (ESM)

- > Crop protection
- > Ploughing with one ox
- > Traditional resolution
- > Conflict resolution
- Need disaggregate analysis



The invisible community members



Experimentations

Chicken breed selection

| Trail/Breed | Indicators | Research team | Findings |
|---|---|--|---|
| <ul style="list-style-type: none"> >Exotic deep red (DRE) >Exotic zebra type (ZBE) >Exotic light yellow (LYE) >Local breed (LB) | <ul style="list-style-type: none"> >Adaptation (feed/water) >Egg laying date/size >Test of egg/meat >Resilience to predators | <ul style="list-style-type: none"> >Farmers >Extension >University >AARC >NGOs | Ranking 1. LB 2. ZBE 3. DRE 4. LYE |

Chicken breed selection

| Indicators | Local breed | Exotic deep red | Exotic zebra type | Exotic light Yellow |
|---------------|-------------|-----------------|-------------------|---------------------|
| Feed/water | *** | ** | ** | ** |
| Egg/size/date | * | ** | ** | ** |
| Taste/market | *** | ** | ** | ** |
| Resilience | *** | ** | *** | ** |
| Rank | 1 | 3 | 2 | 3 |



Goat breed selection

| Trial/Breed | Indicators | Research team | Findings |
|--------------------------|------------------|------------------------|------------------------------------|
| >Local female/Male (LL) | >Adaptation | >Farmers >Extension | Ranking 1. BB 2. LB 3. LL |
| >Local F & Begayt M (LB) | >Meat production | >University >AARC | |
| >Bagayt (M+F)(BB) | >Milk production | >NGOs | |

Goat breed selection

| Indicators | Local female/Male (LL) | Local F & Begayt M (LB) | Bagayt (M+F) (BB) |
|-----------------|------------------------|-------------------------|-------------------|
| Adaptation | *** | *** | ** |
| Milk production | * | * | *** |
| Meat production | * | ** | *** |
| Rank | 3 | 2 | 1 |

Farmers are already demanding to have male Begayt
To easily widespread the improved breed with less risk.



Sex determination by shape of egg

| Hypothesis: Sharp edge is Female? (Farmer Experimenters) | Total Egg | | Hatched | | Female | | Male | |
|--|-----------|----|---------|----|--------|----|------|----|
| | No | % | No | % | No | % | No | % |
| Ato Abadi (Male) | 10 | 70 | 7 | 86 | 6 | 86 | 1 | 14 |
| W/o Brha (Female) | 13 | 77 | 10 | 90 | 9 | 90 | 1 | 10 |
| Total/average | 23 | 74 | 17 | 88 | 15 | 88 | 2 | 12 |

- > Hatching level 70-77%
- > Probability of being female 86-90%



Micro-climate in Beehives

| Hypothesis: Regulated temperature inside the beehive increase bee colony and honey production | Trial/Beehives | Research team |
|---|--------------------------------------|--|
| | >Traditional >Modified >Modern | >Farmers >Extension >University >AARC, NGOs |

- > Daily temperature measurement with thermometer
- > Implication to the development of appropriate technology



PID training

Tahitay Maichew 114 people

- Innovator farmers
- District agricultural office
- Axum Agricultural research centre
- Axum University

Enebse Sar Medir 100 people

- Innovative farmers
- Das, VLDPs, FFSs,
- District line in offices
- Mertule-Mariam Agricultural College
- Debere Markos University

PID and joint experimentation

PID packages

- > Formal/informal
- > Visible/invisible
- > Empower/partnership

Joint experimentation challenges

- > Attitude
- > Power
- > Cost

Networking

- > The East African Farmers' Innovator Fair
- > Celebrating International Farmers' Innovation Day
- > Partnership with AU outreach Directorate
- > Establishment of Friends of farmers
- > Publications (3,000 copies)
- > Axum Platform (AU, BPA, ISD, TMDA, AARC and innovator farmers)



Factors for success of Axum platform

- > Farmers with **experiences of innovation**
- > Farmers innovation serving as **demonstrations**
- > Expectation of **added values** from the members
- > **Direct relationship** of the members
- > Participatory **decision making** among the members
- > Strong **trust and confidence** building
- > **Minimum cost** incur due to proximity
- > The **creation of sub-systems** of platforms to feed the core
- > Sub-units have **saving and long vision**

Policy challenges for PID

- > The policymaking process is biased to **top-down**
- > Predominated by the **transfer** of modern technologies
- > Rural population as **homogeneous**
- > Participation is equated with **mass mobilisation**
- > Political party is considered as the sole **vanguard** for development

Factors for successful policy influence

- > Partnership with **influential** government institutions
- > Addressing community **needs and priorities**
- > Intervention to **complement** government policy
- > **Demonstration** of evidence-based findings
- > **Involving decision-makers** in workshops, evaluation and publications
- > Allocation of sufficient **time and budget**
- > **Training** and capacity building
- > Establishment of **long-term vision** and **commitment**

Challenges

- > 30/70 capacity building under administration
- > Delay in fund release for implementation
- > Ambitious project plan
- > Limitation of seed money for awareness and networking
- > Pushing many activities to coordinator
- > Limitation in internal fund raising
- > Joint research demands finance and time
- > Project cycle not a program

