



# PROLINNOVA

## Mainstreaming LI/PID internationally

Notes on 10-years' achievements for the  
International Partners Workshop 2014, Cambodia

# Mainstreaming *activities* at international level

- Key notes, paper presentations, panels and other ***contributions to (international) workshops*** and (some E-) conferences: average of 8-10 per year;
- ***Co-organisation of international workshops*** (Uganda 2006, Nepal 2009, Kenya 2013, Ouagadougou 2014)
- PROLINNOVA ***website*** managed by IIRR:
- Active ***membership of relevant bodies*** or committees such as steering committee of EFARD;
- ***Bilateral interactions*** with relevant organisations; possibly linked to fund raising

# Mainstreaming activities at international level (ctd)

## ***International Publications:***

- Total of 6 ***briefs for policy makers*** and managers;
- ***Books and journal articles*** for academic audience (3 books, 1 printed);
- ***Booklet series*** for practitioners (4 volumes);
- Large number of ***other articles*** in magazines, newsletters; blogs/posts;



### ***Innovation in smallholder farming in Africa: recent advances & recommendations***

Proceedings of the International Workshop on Agricultural Innovation Systems in Africa (AISA), 29-31 May 2013, Nairobi, Kenya



compiled and edited by

Chesha Wettasinha and Ann Waters-Bayer

Remaining Earth Foundation  
ecologically-oriented agriculture and natural resource management

# Mainstreaming at international level

- Generally activities ***coordinated by the secretariat*** at ETC;
- ***Involving other IST and CP partners***: in contributing to workshops, co-authoring articles;
- ***CP partners also directly contributing*** to international mainstreaming unknown to IST
- ***Linking with GFAR*** and (much less so) the (sub)regional fora;
- Mobilising wider CSO-NGO community ***towards coordinated CSO positions*** in international arena's; e.g. NGO-GCARD yahoo list

# Assessing achievements?

- ***Defining mainstreaming:*** Moving beyond acceptance by individuals to integration into projects and programmes and/or into organizations' overall policies;
- ***The challenge of attribution:*** Did PROLINNOVA achieve /cause observed greater acceptance of LI/PID?
- ***External assessments:*** Using PROLINNOVA external evaluation (2008-9); the Holleman studies (2006; 2010);
- ***PROLINNOVA own monitoring:*** Data annual reports; annual E-evaluation;

# Findings external evaluation

M. Adams & P. Fernando, 2009

- On mainstreaming (of LI/PID) at the international level, **evidence of modest progress** has been provided to the Evaluation.
- At the level of the PROLINNOVA Secretariat activities are done with a **high cost efficiency;**
- International mainstreaming is proving the **most challenging area** to demonstrate achievements.

# Info provided to external evaluation

Assessment of outcome of Prolinnova, by the IST, 2008

Acceptance of LI/PID at international level noted:

Type of organisation	Name of organisation
Extension and research donors (3)	Rockefeller Foundation, European Union, CTA
International research and donors (4)	FARA, IFAD, IMWI, WARDA
International organisations (1)	FAO
National research and development organisations (1)	DFID

# Findings web-based study

## A. Holleman 2006 and 2010

- Assessment of reference to 20 ***Prolinnova buzzwords on the web*** (google scholar, project data bases, websites of international organizations);
- In depth ***interviews*** with 10 international organizations;
- Study in 2010 to assess ***changes compared to 2006;***
- Finding 1: ***No evidence of increased attention*** internationally to PROLINNOVA related approaches;
- Finding 2: ***Methodology*** web-based study ***has limitations*** (except Google scholar search perhaps).



# Google-scholar analysis today

***Modest but noticeable increase*** in attention to 5 key PROLINNOVA concepts and approaches

<b>Concept - approach</b>	<b>2008-2009 (2010 report)</b>	<b>2012-2013 (2014 check)</b>
Farmer innovation	240	353
Local Innovation	1710	3460
Participatory innovation development	22	22
Farmer-led	254	546

# Annual E-evaluation

- Joint own annual assessment on international acceptance of LI/PID approach **somewhat positive**;
- Anecdotal evidence added to support assessments
- Particularly visible through *international partnerships*

Year	Increased international awareness and acceptance on PID / Prolinnova.	Recognition, partnership with international ARD organizations and donors	Number and quality of international publications, their spread and use	Reference to PID, Prolinnova in publications, websites of others	Actual institutional change towards PID in international organizations
2009	<b>3.6</b>	3.8	3.5	4.4	2.9
2010	<b>3.45</b>	3.46	3.85	3.17	3.31
2012	<b>3.48</b>	3.7	3.7	3.5	3.00
2013 (IST)	<b>3.75</b>	5	4	3	3

# Other "evidence" from PROLINNOVA own monitoring

Invited and paid contributions to international workshops and conferences

Period	Average no / year	Notes
2004-2006	11	More events oriented towards more general consultation
2007-2009	7	More content and partnership oriented events
2011 - 2013	12	More content and partnership oriented events

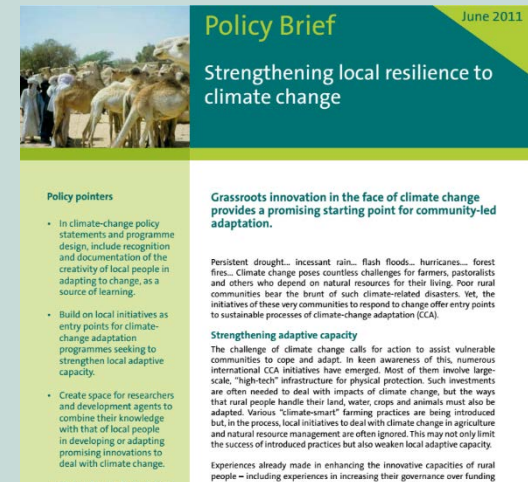
# Recent positive developments

- **CCAFS initiated Concept Note** with PROLINNOVA on Up-scaling PROLINNOVA approaches;
- **Partnership with AAS** intensifying and diversifying;
- Wide **international (funding) support** for international farmer innovation fairs in Kenya 2013 and Burkina Faso 2014.



# LESSONS

- Generally a lot of work done as response to opportunities, *little strategic planning*;
- *Policy briefs* based publications effective relatively easy, not very costly (E-form);
- *Involvement of CPs* in international mainstreaming work effective and important but happening less than before?



# Final words

- **Overall considerable achievements** at international level: Prolinnova has at least contributed to a wider acceptance of LI/PID approach;
- Mainstreaming **results will not last forever**; gains made today can be overruled tomorrow;
- Work is always being done with relatively **limited resources**; fund mobilization for IST international work is becoming increasingly difficult;
- Very **low staff turn-over at the secretariat** level helped PROLINNOVA in work at the international level; this is / should be changing now;

# THANK YOU

PROLINNOVA International Secretariat

c/o ETC P.O. Box 63

E-mail [prolinnova@etcnl.nl](mailto:prolinnova@etcnl.nl)

Website [www.prolinnova.net](http://www.prolinnova.net)